



EUROPEAN STRUCTURAL AND INVESTMENT FUNDS



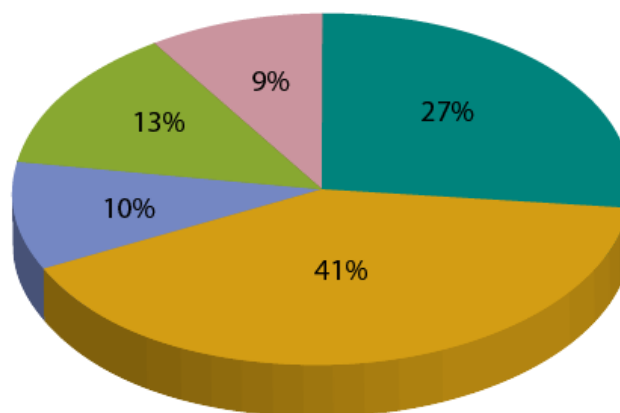
EUROPEAN TERRITORIAL COOPERATION

With a budget of **EUR 454 billion** for 2014-2020, the **European Structural and Investment Funds (ESI Funds)** are the European Union's main investment policy tool. The ESI Funds combine five Funds: **European Regional Development Fund (ERDF)**; **European Social Fund (ESF)**; **Cohesion Fund (CF)**; **European Agricultural Fund for Rural Development (EAFRD)**; and the **European Maritime and Fisheries Fund (EMFF)**. Twenty Member States will also benefit from the **Youth Employment Initiative (YEI)**, which has been integrated into the ESF.

European Territorial Cooperation, better known as **Interreg**, is one of two goals for Cohesion Policy (the other being Investment for Growth and Jobs) and provides a framework for joint action between Member States to find common solutions to shared problems. Interreg is entirely financed by **ERDF**, which is part of the ESI Funds.

Through 60 cross-border, 15 transnational and four interregional programmes, Interreg has been allocated **EUR 9.1 billion** from ERDF for the period 2014-2020 to foster cooperation at EU internal borders. With national co-financing of **EUR 3.1 billion**, Interreg has a total budget of **EUR 12.2 billion** to be invested in various areas, from **environmental protection** to **research and innovation** as well as **transport** and **SMEs**. In addition, Interreg contributes (around **EUR 1 billion**) to EU external border co-operation programmes supported by other instruments – the Instrument for Pre-Accession Assistance (IPA) and the European Neighbourhood Instrument (ENI).

BUDGET (ERDF) ALLOCATION FOR INTERREG (2014-2020)



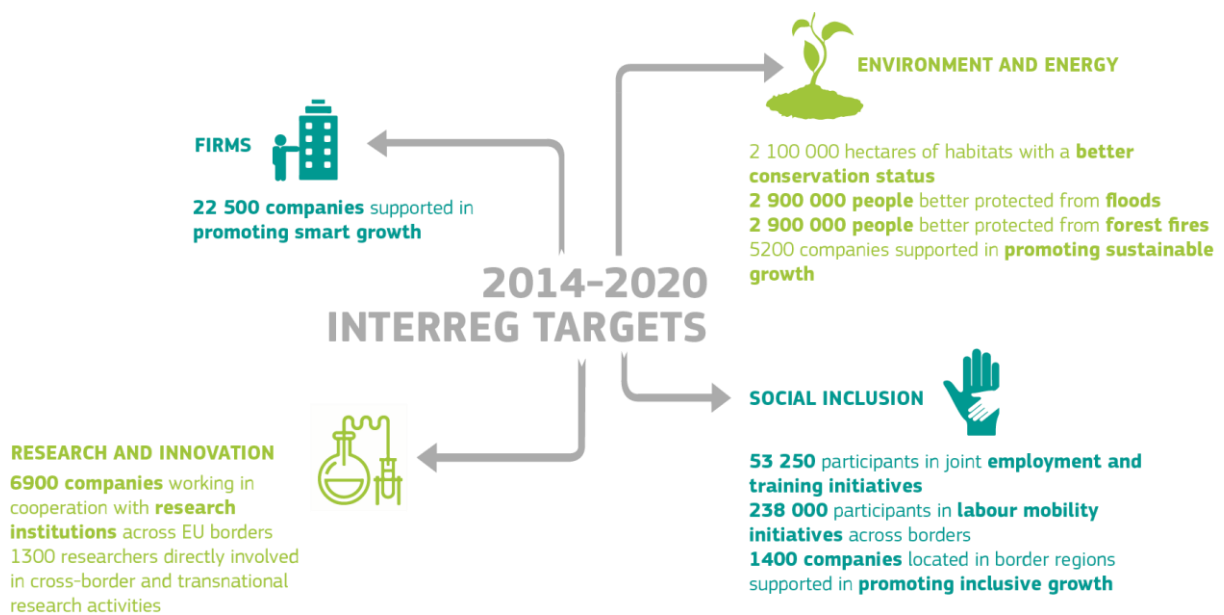
MAIN PRIORITIES

INTERREG WILL CONTRIBUTE TO:

- Improving the **environment**, supporting joint actions in the fields of **water management**, **waste-water treatment**, conservation and restoration of **habitats** and **species**, the prevention of natural and man-made risks such as floods or fires, **sustainable tourism** and **energy efficiency**. Environmental protection goes beyond administrative borders and is therefore a joint responsibility which calls for strong coordination and co-operation between countries.
- Investing in **smart growth** by strengthening research and innovation (R&I).
- Promoting **inclusive growth**: activities linked to employment and education and training will yield more opportunities for joint employment or training initiatives.
- Investing in **transport**, aiming to improve general connectivity, mainly via road and port investment and through the promotion of multimodal, clean and intelligent transport systems across borders.

TARGETS

Interreg is designed to support the **socio-economic development** of EU Member States, participating European Free Trade Association (EFTA) countries (Iceland, Liechtenstein, Norway and Switzerland) and Andorra. The expected results (**targets**) give an overall view of Interreg contribution to key objectives by 2020.



SUCCESS STORIES: EXAMPLES OF INTERREG PROJECTS IN 2007-2013

INNOREG: DEVELOPING INNOVATIVE BUSINESS MODELS FOR COMPETITIVENESS (CENTRAL BALTIC)

The project supported the scientific and technical potential of the Central Baltic region. One key result is its new flexible manufacturing system. The project also organised various pilot trainings in mechatronics to test the potential of cross-border collaboration and, based on the future needs identified, has created a development plan for the region in the field of mechanical engineering and mechatronics.

Total budget: **EUR 2 987 306**

EU budget contribution to the project from ERDF: **EUR 2 494 395**

More information: <http://europa.eu/!vB67vq>

MI.CO.TRA. PROMOTING TRANSNATIONAL SUSTAINABLE AND ECO-FRIENDLY MOBILITY (INTERREG IV-A ITALY-AUSTRIA)

A cross-border rail link project between Austria (Villach) and Italy (Udine) is providing a much-needed connection between the two towns, bringing economic, social and environmental benefits. The project has provided effective rail connections for more than 6000 passengers per day during the peak season, with 99.19 % of the trains running on time.

Total budget: **EUR 1 405 000**

EU budget contribution to the project from ERDF: **EUR 749 970**

More information: <http://europa.eu/!xk84dC>

PROINCOR: BOOSTING SMES INNOVATION FROM THE BALTIC TO THE ADRIATIC (CENTRAL EUROPE)

Proactive Innovation Support for SMEs (PROINCOR) supports innovation in SMEs in the corridor which runs from the Baltic to the Mediterranean. One hundred managers and employees received innovation training. Innovation management systems were improved in 160 companies and 80 product and process development projects were launched. The project also included targeted project visits to SMEs to perform innovation audits and to show entrepreneurs how to develop innovation management systems to make the most of research and technological development.

Total budget: **EUR 3 064 047**

EU budget contribution to the project from ERDF: **EUR 2 435 128**

More information: <http://europa.eu/!Pt78up>

SCANDINAVIAN GAME DEVELOPERS: NEW BUSINESS MODELS AND INCUBATION SUPPORT (INTERREG IV-A ØRESUND-KATTEGAT-SKAGERRAK)

The project supported entrepreneurs in the Scandinavian gaming industry, helping them to establish viable companies and survive in a highly competitive business environment of one of the biggest digital industries in the world. During its lifetime, the project helped to establish 22 new small companies. Recently, one of the companies managed to attract DKK 2 million of external investment. An independent evaluation of the project noted that all the new companies said that the incubators were vital to their survival and offered dynamic and inspiring environments in which to work.

Total budget: **EUR 1 137 257**

EU budget contribution to the project from ERDF: **EUR 568 628**

More information: <http://europa.eu/!ku86NY>

TOWARDS A SUSTAINABLE ENERGY FUTURE FOR EUROPE'S CITIES (INTERREG IVC)

The project aimed at mobilising pilot cities (Bistrița, Dobrich, Figueres, Lille, Milton Keynes, Munich, Modena and Odense) to develop a local Energy Roadmap 2050. It developed a tool to help the cities assess their energy policies and work out how to become more sustainable. Preparation of the roadmaps generated significant impacts, with cities updating their local sustainable energy action plans as a result of the work carried out. In total, the roadmaps will affect the lives of about 2 450 000 residents across all eight cities.

Total budget: **EUR 1 357 039**

EU budget contribution to the project from ERDF: **EUR 1 026 576**

More information: <http://europa.eu/!Qn98Xj>

FIND OUT MORE ABOUT INTERREG

- ESI Funds: <http://ec.europa.eu/esif>
- Interreg: http://ec.europa.eu/regional_policy/en/policy/cooperation/european-territorial/
- Interreg in the ESI Funds Open Data Platform: <https://cohesiondata.ec.europa.eu/countries/TC>
- Interreg project examples: <http://europa.eu/!tx73yU>
- Keep database: <http://www.keep.eu/keep/>
- Follow us on Twitter: [@EU_Regional](#) #ESIFunds #Interreg